



Meeting Notice and Newsletter

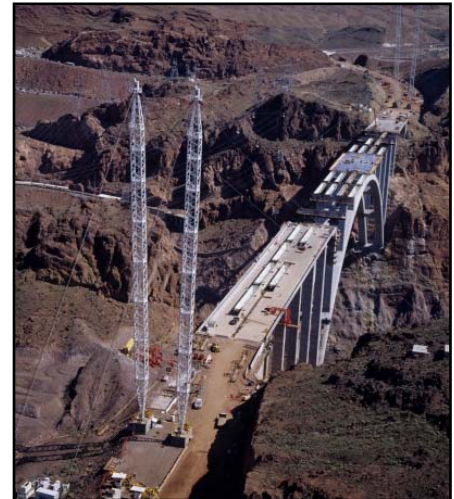
May 2010

May Luncheon Notice:

We are pleased to announce this month's guest speaker is Ms. Bonnie Klamerus who will be speaking on the topic of the "Hoover Dam Bypass Project". The meeting will be held on Tuesday, May 18, 2010 at Lawry's Prime Rib at 4043 Howard Hughes Parkway.

Bonnie Klamerus is the Structures Manager for the Hoover Dam Bypass Project. She has worked for the Federal Highway Administration for twenty-seven years as a structural engineer for Central Federal Lands Highway Division. During the last nine years, she has been responsible for managing the delivery and construction support of the structures elements on the landmark Hoover Dam Bypass Project, including the concept development and design of the Colorado River Bridge which, when complete, will be the longest concrete arch in North America. Bonnie earned both Bachelor of Science and Masters degrees in Civil Engineering from Michigan Technological University, and is a Registered Professional Engineer in the State of Colorado.

The lunch will be held from 11:30 AM to 1:00 PM and the cost is \$25.00 for those who RSVP before 12:00 PM on Friday, May 14, 2010 and \$27.00 for those who register thereafter. NSPE is now offering a discounted rate of \$20.00 for students who provide student ID. If you would like to attend the May luncheon, please RSVP on the NSPE website <http://www.nspenv.org/south/lunch-rsvp.html> or contact Brook Demitropoulos at (702) 804-2042.



View of the bridge as seen from Nevada towards Arizona.
For additional photos and information visit
<http://www.hooverdambypass.org>

May Luncheon Sponsor:



ONE COMPANY | Many Solutions

7180 Pollock Drive, Suite 200
Las Vegas, NV 89119

Phone: (702) 938-6000 Fax: (702) 938-6060
www.hdrinc.com

Calendar of Events:

Date	Activity / Location	Time
Tuesday 5/18/10	NSPE Monthly Luncheon Hoover Dam Bypass	11:30 AM
Tuesday 6/15/10	NSPE Monthly Luncheon 10 Things You Need To Know About Seismic Engineering	11:30 AM
Tuesday 7/20/10	NSPE Monthly Luncheon To Be Determined	11:30 AM

Thank You to Dana Reel and Black & Veatch who sponsored the April luncheon. The NSPE Southern Nevada Chapter and our Officers are grateful to all the local companies like Black & Veatch who continue to support NSPE efforts. If your company is interested in being a sponsor in 2010, please contact Olivia Furlan at ofurlan@BrwnCald.com.

In This Newsletter:

News, Updates & Becoming a NSPE Member.....Page 2
 NSPE WPR Annual Meeting.....Page 3
 NSPE Chapter Officers.....Page 3
 American Concrete Institute Registration Form.....Page 4



News & Updates

- **Elections** - NSPE Chapter Board Member Elections for 2010-2011 will be happening soon. The ballots will be emailed out. Don't forget to vote!
 - **Employment Opportunities** - NSPE's Southern Nevada Chapter now posts job opportunities on our website. If you or someone you know is seeking employment, please visit the employment opportunities section at www.nspenv.org.
- If your company is currently hiring and you would like NSPE to post the employment opportunity on our website, please contact Mr. Tony Hills at anthony.hills@swgas.com.
- **A Special Thank You** - We would like to thank the Nevada Association of Land Surveyors who helped sponsor and hand out the PE lunches. And a special thank you to all the volunteers who helped with the PE lunches on April 16, 2010.
 - **NSPE Annual Meeting** - The NSPE Annual Meeting for State Leaders Conference will be held July 14th thru 18th, 2010 in Orlando, Florida.
 - **Las Vegas Chapter American Concrete Institute** - ACI is holding a meeting and dinner regarding new concrete tolerances. PDH's can be earned for attendance. Please see the attached flyer for additional information.

Become a Member of NSPE:



If you are interested in becoming a NSPE member, visit the National website at <http://www.nspe.org/JoinNow/index.html>.

As the only engineering society that represents individual engineers across all disciplines, NSPE offers a full menu of services and products. What do you need to give you the *EDGE*? Find it with NSPE.

Networking: No matter what your specialty or in what area you work, networking is one of the most valuable NSPE benefits. With NSPE, you can choose to network in the ways that suit you best. Attend our annual convention, go to local chapter or state meetings, or use our online forums to talk with colleagues from your office or home.

Career Advancement: Whether you're looking for your first job or seeking a new opportunity, membership in NSPE can give you a career edge. In the Employment section of our Web site, you'll find job boards, a resume posting service, and Salary Survey information. Members receive the added benefit of having links to their resumes sent to potential employers. NSPE also offers an online mentoring program for students and professionals new to the field where you can get advice, find out about internships and new jobs, and ask questions of experienced licensed engineers. Experienced engineers can seek advice on career changes and discuss new opportunities with peers from around the country in our online career transitioning forum.

Education: As our professions become more specialized, continuing education becomes not only important but critical to career success. NSPE members can choose the offerings that fit their needs and their schedules: Licensure Programs, Online Courses, Self-study Videos, Local Programs and Courses.

Professional Growth: NSPE members benefit from a number of ways to set themselves apart in a tight job market. Our practice divisions allow you to learn more about your industry and network with others working in the same field. Take on leadership positions by working with your local and state chapters, or volunteer with MATHCOUNTS, the Junior Engineering Technical Society (JETS), or National Engineers Week.

Advocacy and Public Relations: Through NSPE, you are represented on Capitol Hill, in local legislatures, and to the public. NSPE speaks for the engineering profession through campaigns like National Engineers Week, Put the Brakes on Fatalities, and public relations outreach, NSPE tells the public how engineers add to their lives by making them safer, easier, and more fun.

Information: With your NSPE membership, you know the latest developments and news in engineering. Our e-newsletters *NSPE Update* and *U.S. Engineering Press Review* get members the news they need right now. Talk with engineers from around the country in our online forums. Stay on top of trends and innovations with publications like *Engineering Times*.



NSPE WPR Annual Meeting Held:

The NSPE Western and Pacific Region Annual Meeting was held in Las Vegas on April 24, 2010. Representatives from seven western states came to Las Vegas for the Annual Meeting of NSPE's Western and Pacific Region (WPR) at the Hyatt Place, Las Vegas. WPR Chair Susanne Leckband convened the meeting at 8:00 AM with NSPE President-elect Michael Hardy and NSPE WPR Director Alan Werner in attendance. Topics discussed included:

- Report of the NSPE Continuity Task-Force about the recommendation to permit state societies to elect to offer state only membership in exchange for national-only membership.
- Discussion by Greg Brands of the Idaho Society of Professional Engineers on Standard of Care and how this topic attracted considerable attendance at PDH workshops in Idaho. It was thought that offering professional development workshops this topic might serve as a potential rallying cause and membership development vehicle for the individual state societies, and national NSPE.
- Discussion by attorney Christine Drage of the recent California court case, UDC Development vs CH2M-Hill, that found CH2M-hill not negligent but still liable for UDC's legal defense costs, without insurance compensation, because of a "duty to defend" clause in CH2M-Hill's contract, and suggestions for modifications to contract language to avoid a repeat of this situation
- Presentation by NSPE WPR Director Alan Werner on the more than 400 products and services that NSPE offers to its members
- Discussion of progress made in Idaho in 2009 by the Quality Based Selection Facilitator Council, in terms of partnerships developed among 10 partner Idaho professional societies, requests for information or assistance, notifying entities about Idaho law regarding QBS requirements, & making presentations about QBS.
- Discussion regarding Engineers without Borders initiatives taking place in the western pacific region states.

The next meeting of the Western and Pacific Region will be held in Alaska in the spring of 2011.

2009-2010 Chapter Officers:

- President..... Tony Hills, PE
Southwest Gas
- Vice President..... Brook Demitropoulos, EI
G.C. Wallace, Inc.
- Treasurer.....Rosa Cortez, PE
City of Las Vegas Public Works Dept.
- Secretary..... Willard Pack, PE
Black & Veatch
- Director.....Raniah Ziadah, EI
MWH
- Director – Membership/Website..... Olivia Furlan, PE
Brown & Caldwell
- Past President.....Allen Pavelka, PE
Clark County Public Works

2008-2010 NV State Officers:

- State President Claire Kohatsu, PE
Aztech Materials Testing
- President Elect..... David James, Ph.D, PE
University of Nevada Las Vegas
- State Director-Auditor..... Rosa Cortez, PE
City of Las Vegas Public Works Dept.
- State Past President Tom Miller, PE
Martin & Martin
- National Director Charlie Vaughn, PE
- State Administrator..... Ramona Lesley

NSPE Foundation:

- President..... Michael Holloway, Ph.D., PE
- Trustee..... Tom Miller, PE
- Trustee..... Tony Hills, PE
- Trustee..... David James, Ph.D., PE
- Trustee..... Claire Kohatsu, PE
- Trustee..... Rosa Cortez, PE
- State MATHCOUNTS Coordinator..... Christine Smith
- Foundation Auditor Emeritus..... Charlie Vaughn, PE
- Treasurer Ramona Lesley

Las Vegas Chapter - American Concrete Institute New Concrete Tolerances - Are You Ready? Presented by: Eldon Tipping, Structural Services Inc.

Wednesday - May 12, 2010

Buffet Dinner 5:00 p.m.
Speaker 5:30 p.m. - 7:00 p.m.

WHERE

The meeting is at Sierra Gold located at 6595 S. Jones Blvd. (north of the 215 & Jones), in the upstairs banquet room.

REGISTRATION FEES

Members	\$35	At the Door	\$45
Non-Members	\$40	Students	\$15

Registration fee includes dinner buffet and meeting. Deadline for registration is **Friday, May 7, 2010**.

CANCELLATION POLICY

To cancel your registration, call the Chapter office at (702) 656-8827. If you cancel on or before May 10, we will refund your fee. There are no refunds after May 10 **and no shows are billed**.

Professional Development Hours

A certificate for one Professional Development Hour will be issued to each attendee at the **conclusion** of the presentation.

REGISTRATION FORM

Company

Address

Phone

Fax

Name and Email Address

Name and Email Address

Name and Email Address

Mail form and payment to:

Las Vegas Chapter - American Concrete Institute
P.O. Box 35915 □ Las Vegas NV 89133
Fax: 702-656-4981
Phone: 702-656-8827
Email: acilasvegas@earthlink.net

ACI Committee 117- Concrete Tolerances has just completed the standardization process for a new document "Specifications for Tolerances for Concrete Construction and Materials" that will take effect in 2010. In this meeting, specific changes in the specifications that govern tolerances for most concrete construction in the United States will be presented.

Eldon Tipping is the President of Structural Services, Inc. (SSI), a privately held company based in Richardson, Texas. His 36 years of experience in the design and construction industry began as a structural designer for commercial and industrial structures. After founding his firm in 1988, Mr. Tipping developed placement, finishing, and monitoring procedures that make construction of superior on-ground and suspended slabs practical.

Mr. Tipping is currently a member of ACI's Technical Activities Committee. His other ACI Committee Memberships include Committee 117 Concrete Tolerances (outgoing Chair); 302 Guide for Concrete Floor and Slab Construction (Past Chair), 360 Design of Slabs on Grade and 544 Fiber Reinforced Concrete. In 2005 he was selected by *Concrete Construction* magazine as one of the Ten Most Influential People in the Concrete Industry and is a frequent World of Concrete speaker.

ACI document 117 governs every aspect of concrete construction from Reinforcement to Foundations; Concrete Materials to Batching; Pavements/Sidewalks to Cast-in-Place Bridges. Designers, contractors, commercial builders, concrete specialty companies, readymix producers, agencies, construction management firms, and testing labs should all attend in order to be prepared to implement the new document specifications.

____ Members \$35 ____ Students \$15
____ Non Member \$40 ____ At the Door \$45

Method of Payment

- | | |
|---|---|
| <input type="checkbox"/> Check | <input type="checkbox"/> Bill Me - Members Only |
| <input type="checkbox"/> Visa | <input type="checkbox"/> MasterCard |
| <input type="checkbox"/> American Express | |

Credit Card #

Exp. Date

V-Code Visa/MC three digits on back of card AMX four digits on front of card

Mailing Address for Card

Signature